

One Stage Gas Burners Riello 40 FS

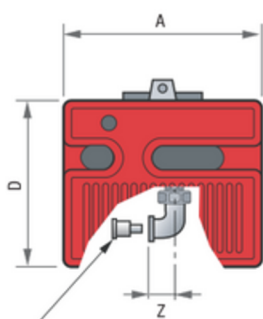
The Riello 40 FS series of one stage gas burners, is a complete range of products developed to respond to any request for light industrial application.

The Riello 40 FS series is available in five different models, with an output ranging from 11 to 220 kW, divided in four different structures. All the models use the same components designed by Riello for the Riello 40 FS series.

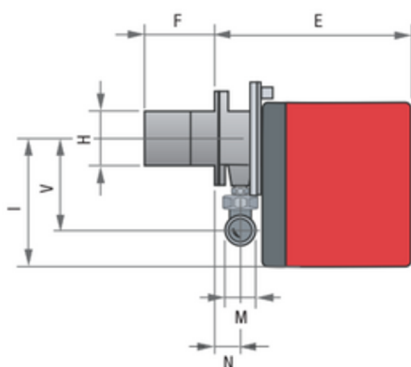
All the models are approved by the EN 676 European Standard and conform to European Directives for EMC, Low Voltage, Machinery and Boiler Efficiency. All the Riello 40 FS burners are tested before leaving the factory.



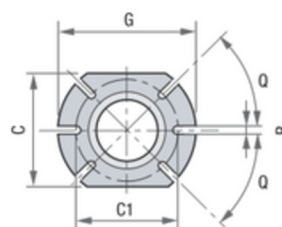
DIMENSIONS



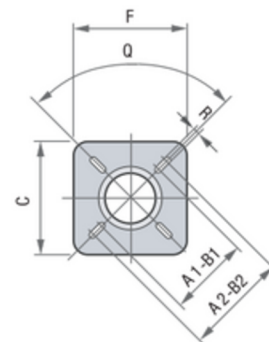
Reduction nipple**
Rp 1/2" - Rp 3/8"



Burner-Boiler mounting flange



FS3 - FS5 - FS8 - FS10



FS20

DIMENSIONS TABLE (in mm)

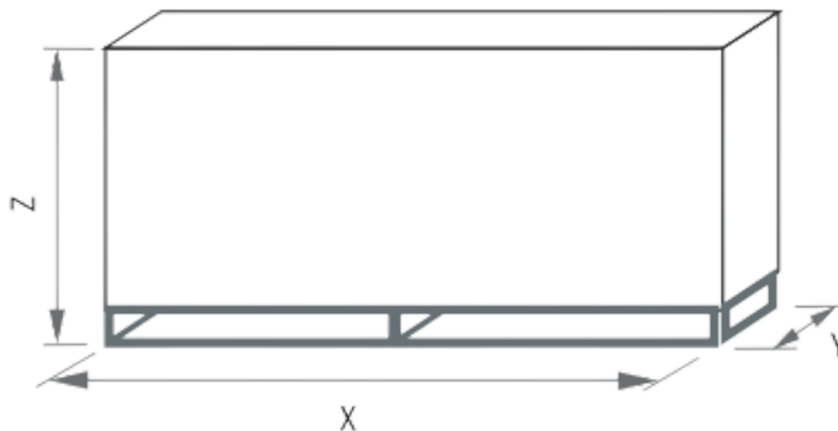
Model	A	D	E	F	H	I	M	N	V	Z	A1	A2	B1	B2	C	C1	G	Q	R
FS3	252	215	230	100	91	165	Rp 3/8" *	37	132	25	-	-	-	-	140	130	170	45	10
FS5	272	233	295	100	91	180	Rp 1/2"	48	138	28	-	-	-	-	140	130	170	45	10
FS8	305	262	347	110	105	204	Rp 3/4"	61	142	33	-	-	-	-	160	130	185	45	11
FS10	305	262	346	110	105	204	Rp 3/4"	61	142	33	-	-	-	-	160	130	185	45	11
FS20	350	298	389	120	125	230	Rp 3/4"	67	152	33	155	200	155	200	170	-	170	90	11

(*) With reduction nipple.

(**) Standard equipment on R40 FS3.



PACKAGING DIMENSIONS (in mm)



Model	X	Y	Z	Kg
FS3	365	325	300	5
FS5	435	345	315	11
FS8	473	413	320	13.6
FS10	473	413	320	17
FS20	525	453	365	17

IMPORTANT ASPECTS TO HIGHLIGHT

The high quality level guarantees safe working.

The Riello 40 FS burners are fitted with a microprocessor - based flame control panel, with diagnostic functions.

In developing these burners, special attention was paid to reducing noise, to the ease of installation and adjustment, to obtaining the smallest size possible to fit into any sort of boiler available on the market.



At EQA, we strive to minimize our environmental impact through sustainable and responsible practices. Therefore, we encourage you to join our commitment and, at the end of the product's lifecycle, adhere to the current Municipal, Provincial, and National regulations regarding the classification, recycling, destruction, or disposal of the product, spare parts, non-reusable parts, and packaging. By doing so, we prevent environmental damage and promote reuse and recycling whenever possible. Thank you for your commitment and efforts in joining these actions.