

These valves have been designed in order to continuously monitor outlet pressure delivered by a pressure regulator valve, they are installed upstream of the regulating system (check schematics), this way, they will be able to protect the whole system in case the regulated pressure increased or decreased beyond the specified range, if this would happen, the mechanism in the valve would activate and completely interrupt the fluid flow.

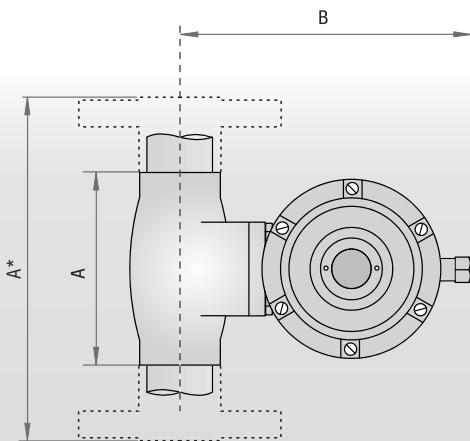
To reestablish service, the mechanism must be manually reset, this requires the operator to check the system for the problem which caused the interruption.

These valves may be used for Natural Gas as well as for LPG, in each case the valve shall be set to the working range specified by the respective standard, this can be accomplished by using the adequate control spring.

This devices shall be installed between upstream and downstream ball valves (check schematics), these valves are to be shut in order to reset the system.



DIMENSIONS (mm).



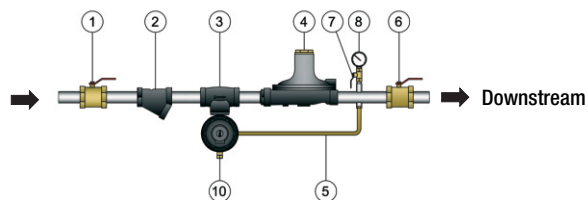
Connection Style	B17/27/17AB		B25	
	A	B	A	B
3/4" y 1"	117	185	117	195
1 1/2" y 2"	160	185	160	195
1" Flanged S300			197*	195
2" Flanged S300			267*	195

Shut off Valves

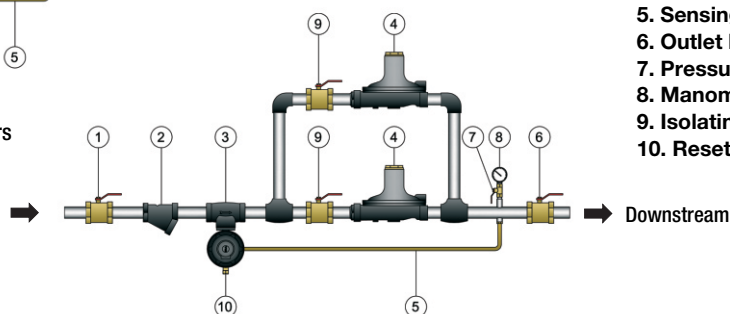
EQA 17/25/27

Installation scheme.

1 Regulator



2 Regulators



1. Inlet ball valve.
2. Filter.
3. Safety shutoff valve.
4. Pressure Regulator.
5. Sensing line.
6. Outlet ball valve.
7. Pressure Tap.
8. Manometer or plug.
9. Isolating ball valve.
10. Reset.

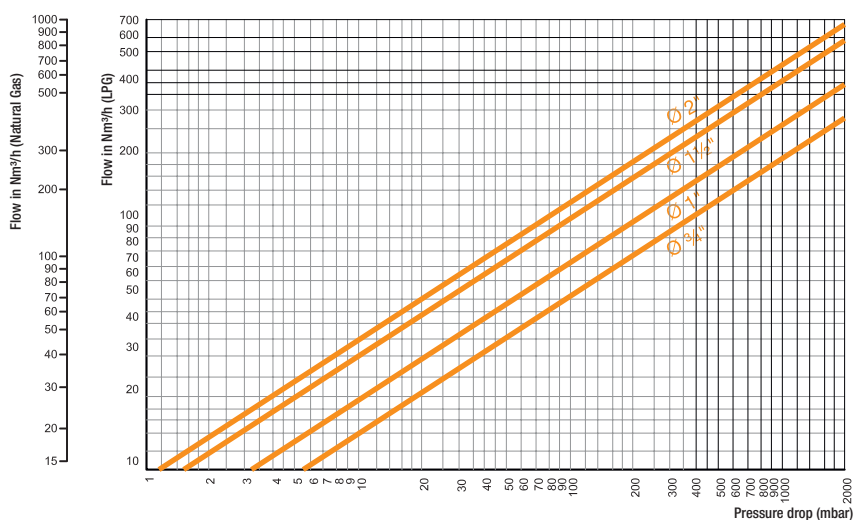
TECHNICAL DATA

AVAILABLE MODELS	B17	B27	B25	B17AB
High pressure shut off device	Yes	Yes	Yes	Yes
Low pressure shut off device	No	No	No	Yes
High flow shut off device	No	No	No	Yes
Max. working pressure (bar)	10	19	36	6
Design pressure (bar)	17	30	54	17
Min. shut off pressure (bar)	0.02	0.02	0.02	0.01 (Low) 0.04 (High)
Max. shut off pressure (bar)	4.5	4.5	4.5	1.2 (Low) 2.0 (High)
Max. shut off pressure (bar)	Cast Iron		Steel	Cast Iron
Connection style	BSP	BSP	BSP / S300*	BSP
Flow Capacity	Check flow capacity chart.			
Installation position	Indifferent.			

*Flanged S300 only in sizes 1" y 2"

CAPACITIES ACCORDING TO PRESSURE DROP AND ORIFICE DIAMETER

(Mod. B17, B17AB y B25) *



RESET INSTRUCTIONS

(In case of excess high pressure shut off)

1. Close downstream ball valve. (6)
2. Slowly open upstream ball valve (1). In case of having 2 regulators, make sure ball valves (9) are fully opened.
3. Unscrew the reset and gently pull it without letting go, a slight flow of gas will pass through and fill the chamber, stabilizing the pressure downstream, when this happens you will feel the system resets and stays in position. (The reset will stay in position only when downstream pressure fits in the working range).
4. Screw the reset, making sure it's tight in position, this way it avoids improper activation.
5. Slowly open downstream ball valve (6).

EQA S.A.I.C.

26 de abril 3836 - ITUZAINGO (1714) - Pcia. de Buenos Aires
 Tel. (54 11) 4481-9950 y rotativas / Fax.(54 11) 4481-9288
 e-mail: eqa@eqa.com.ar - web site: www.eqa.com.ar

DISTRIBUIDOR | DISTRIBUTOR